



REMAX
EASTERN
REALTY INC.

Contact

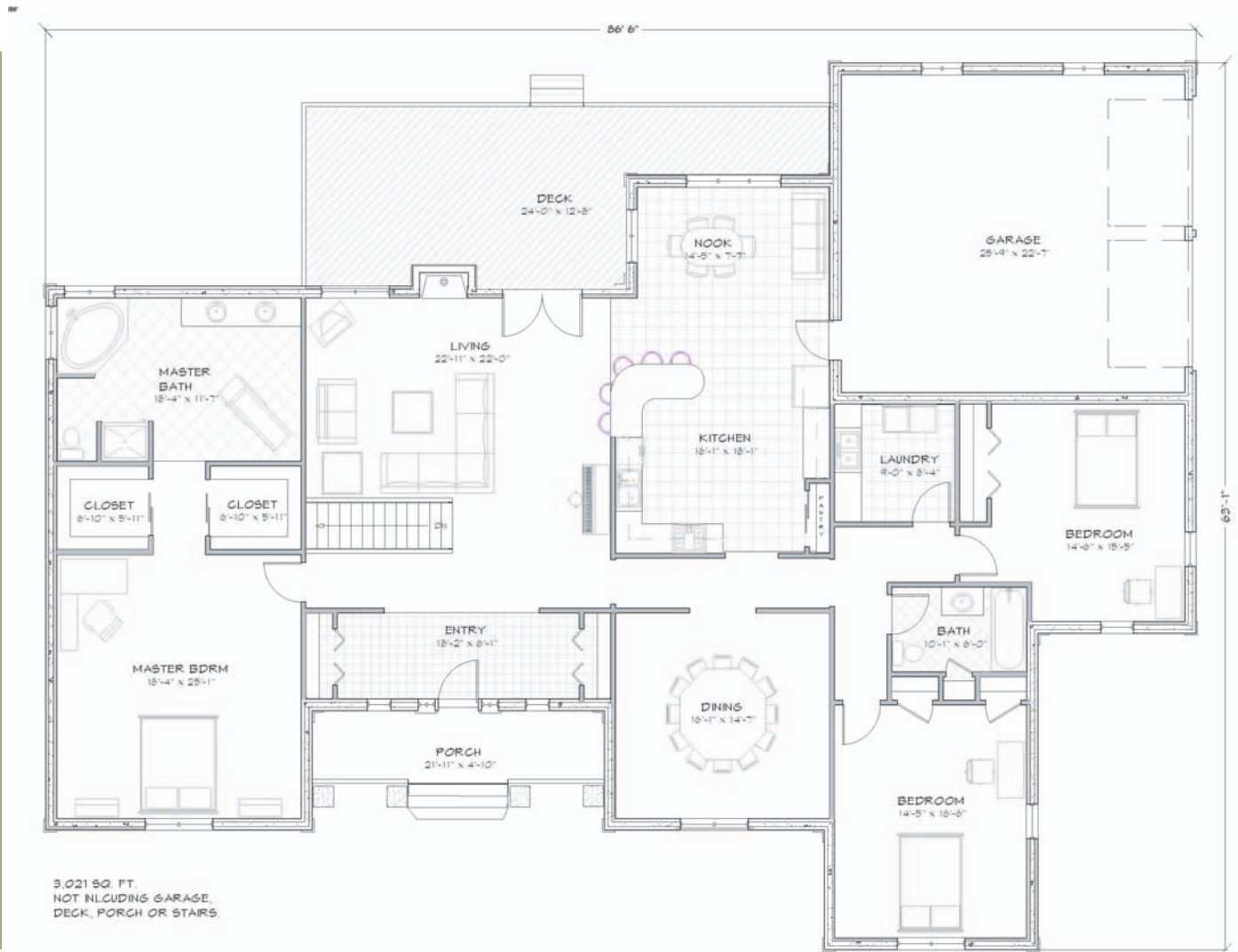
Ron Whetung
or Derek Green
at

(705) 743-9111

Toll Free 1-800-567-4546

THE POPLAR

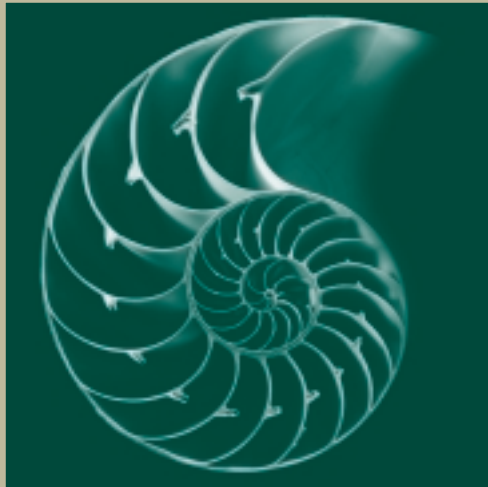
3021 SQ FT



3 BEDROOM

An elegant and spacious ranch bungalow with three oversized bedrooms, a bright and open living area and a separate formal dining room.





Our visual trademark, the Nautilus, is an aquatic creature that combines perfect design with amazing engineering. Beautiful in form, yet strong enough to withstand immense pressures, the Nautilus symbolizes the iBuilt Homes commitment to building elegant and durable homes.

The Sensible
Way to Build



Building Your Dream

Your dream home is more than walls and ceilings, it's an expression of your personality, a climax of your aspirations. At iBuilt Homes, we bring your dream home to life, with elegant floor plans, a wide range of designs to fit your budget and use of sophisticated Insulated Concrete Form (ICF) technology.

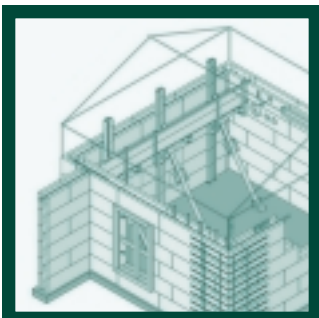
Our entire approach to home building revolves around you. We start with your needs, taste and budget and either select the most appropriate iBuilt floorplan or build you a new, customized design. Either way, we make sure you are getting the best fit and the highest value for your investment.

All our homes are built with state-of-the-art ICF technology, which is not only superior to traditional stick framing, but also faster to erect, more cost-effective and environment friendly. Check out the unbeatable benefits of an ICF home from iBuilt Homes, listed over on the right.

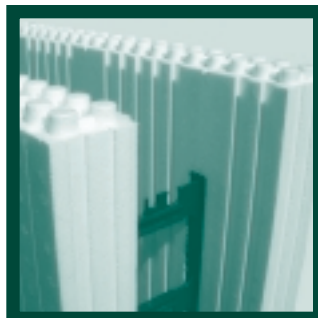
- Superior Strength – Use of reinforcing steel rods and concrete makes your home stronger and more durable in the long run.
- Faster Construction – Offers you substantial savings on labour costs and time, and lets you live your dream quicker.
- Highly Energy Efficient – The foam we use acts as an efficient insulator, conserving energy and lowering your heating and cooling costs.
- Better Sound Insulation – ICF walls deflect ambient sounds better than traditional walls, providing a quieter indoor environment.
- Highly Moisture Resistant – Unlike traditional framing which is prone to moisture and mould build-up, ICF resists moisture penetration better.
- Better Fire Protection – ICF homes offer a better fire rating than traditionally built homes, giving your family more protection.
- Environment Friendly – Use of ICF technology conserves our forestry resources and saves our environment in the long run.

Ultimately, iBuilt Homes is about giving you flexibility and control.

We provide you with the convenience of one-stop shopping for your chosen floor plan, complete with engineered drawings, and the entire ICF shell for your home including the basement, floors, roof, windows and doors, leaving you free to do the finishing at your own pace. You can either use your own ICF contractor, or we can recommend one with a proven track record.



ICF technology offers long-term durability for your home.



The thick foam provides excellent insulating properties.



ICF walls are fast and easy to build



ICF homes can be built using conventional tools and methods.

Ontario ICI

Contact Ron Whetung or Derek Green at (705) 743-9111 or Toll Free at 1-800-567-4546